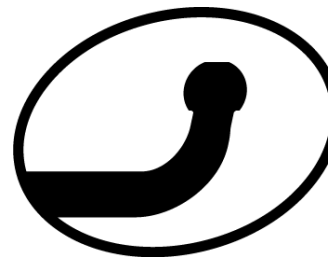


Towing hitch accessories:

Pos. 1 Main bar PCS.: 1	Pos. 6 Distance sleeve ø25xø15mm L=43mm PCS.: 2	Pos. 12 Bolt 8,8 B M12x70mm PCS.: 1	Pos. 18 Nut 8 B M10 PCS.: 12
	Pos. 7 Fish-plate 180x40x5mm PCS.: 2	Pos. 13 Bolt 8,8 B M10x100mm PCS.: 2	Pos. 19 Plain washer ø12mm PCS.: 2
Pos. 2 Tow ball PCS.: 1	Pos. 8 Rectangular washer 60x30x4mm PCS.: 2	Pos. 14 Bolt 8,8 B M10x70mm PCS.: 2	Pos. 20 Plain washer ø10mm PCS.: 12
Pos. 3 Socket plate PCS.: 1	Pos. 9 Angle fish-plate 86x83x25mm PCS.: 2	Pos. 15 Bolt 8,8 B M10x35mm PCS.: 6	Pos. 21 Spring washer ø12mm PCS.: 2
Pos. 4 Bracket PCS.: 1	Pos. 10 Washer ø30xø10,5x2,5mm PCS.: 2	Pos. 16 Bolt 8,8 B M10x30mm PCS.: 2	Pos. 22 Spring washer ø10mm PCS.: 12
Pos. 5 Distance sleeve ø17,2x2,35mm L=64mm PCS.: 2	Pos. 11 Bolt 8,8 B M12x75mm PCS.: 1	Pos. 17 Nut 8 B M12 PCS.: 2	Pos. 23 Ball cover PCS.: 1



AUTO-HAK Sp. z o. o.

ul. Słoneczna 16K 76-200 SŁUPSK
POLAND
tel./fax. + 48 59 8 414 414; + 48 59 8 414 413
e-mail: office@autohak.com.pl
www.autohak.com.pl

Towing hitch (without electrical set)

Class: **A50-X** Cat. no. **AL32**

Designed for:

Manufacturer: **ALFA ROMEO**

Model: **146**

Type: **5 doors**

produced since 1995 till 2001

Technical data:

D-value: 7,80 kg

maximum trailer weight: **1300 kg**

maximum vertical cup load: **75 kg**

Approval number according to Directive 94/20/EC: **e20*94/20*0335*00**

Foreword

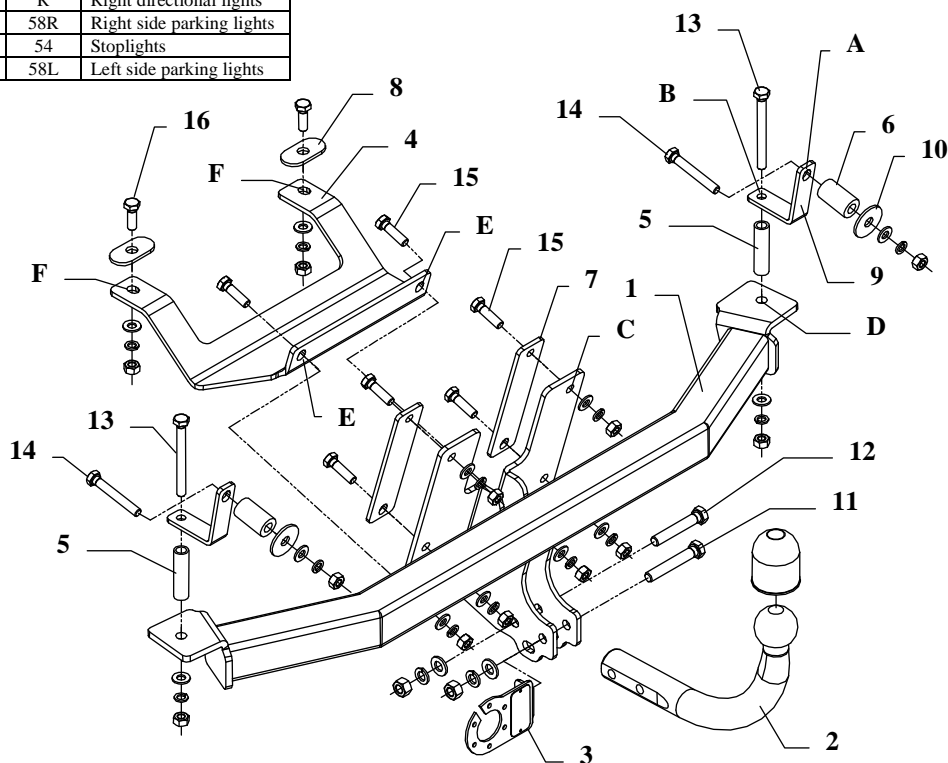
This towing hitch is designed according to rules of safety traffic regulations. The towing hitch is a safety component and can be install only by qualified personnel. Any alteration or conversion of the towing hitch is prohibited and would lead to cancellation of design certification. Remove insulating compound and underseal from vehicle (if present) in the areas of the matting surfaces of the towing hitch. The vehicle manufacturer's specifications regarding trailer load and max. vertical cup mass are decisive for driving whereat values for the towing hitch cannot be exceeded.

D-value formula:

$$\frac{\text{Max trailer weight [kg]} \times \text{Max vehicle weight [kg]}}{\text{Max trailer weight [kg]} + \text{Max vehicle weight [kg]}} \times \frac{9,81}{1000} = D \text{ [kN]}$$

Clamp mark in acc. with		Cables joining
ISO	PN	
1	L	Left directional lights
2	+	Rear fog lights
3	31	Ground
4	R	Right directional lights
5	58R	Right side parking lights
6	54	Stoplights
7	58L	Left side parking lights

FITTING INSTRUCTION



This towing hitch is designed to assembly in following car:
ALFA ROMEO 146, 5 doors, produced since 1995 till 2001, catalogue
no. **AL32** and is prepared to tow trailers max total weight **1300 kg** and max
vertical load **75 kg**.

From manufacturer

Thank you for buying our product. Their reliability has been confirmed in
many tests. Reliability of towing hitch depends also on correct assembly and
correct exploitation. For this reasons we kindly ask to read carefully this
instruction and apply to hints.

The towing hitch should be install in points described by a car producer.

The instruction of the assembly

1. Disassemble a spare wheel, carpet, rear panel cover and side carpets.
2. In rear panel (inside), under sound proof layer are four factory marked
points. Find them and drill holes $\varnothing 10,5$ mm.
3. From below the car (in left and right chassis member) are holes $\varnothing 18$ mm.
Through this holes drill another holes to trunk interior using bit $\varnothing 10,5$ mm
(make very carefully).
4. To made holes put angle fish-plates (pos. 9), and next through hole (pos.
A) in angle fish-plate (pos. 9) mark point on rear panel. In this point drill
hole $\varnothing 25$ mm. In made holes slip distance sleeves $\varnothing 25 \times \varnothing 15 \times 43$ mm (pos. 6)
and put angle fish-plate (pos. 9) again. Put bolt M10x100mm (pos. 13)
through hole (pos. B) and through hole (pos. A) bolt M10x70mm (pos. 14).
Fix loosely with distance sleeve (pos. 6) as shown in the drawing.
5. Put the main bar of towing hitch (pos. 1) between bumper and rear panel,
fix through hole (pos. C) and fish plates (pos. 7) using bolts M10x35mm
(pos. 15). Through holes (pos. D) slip distance sleeves $\varnothing 17 \times 2,35$ mm,
L=64mm (pos. 5) below the car. Fix with bolts M10x100mm (pos. 13).
6. To the main bar of towing hitch (pos. 1), through hole (pos. E) fix bracket
(pos. 4) using bolts M10x35mm (pos. 15), next through holes (pos. F) drill
to trunk interior holes using bit $\varnothing 10,5$ mm and fix all using bolts
M10x30mm (pos. 16) (use washers (pos. 8)).
7. Fix tow ball (pos. 2) using bolt M12x75mm (pos. 11) and M12x70mm
(pos. 12). With bolt M12x75mm fix also a socket plate (pos. 3). See figure
1.
8. Tighten all bolts according to the torque shown in the table.
9. Connect electric wires of 7-poles socket according to the instruction of the
car. (Recommend to make at authorized service station)
10. Complete paint layer damaged during installation.

Torque settings for nuts and bolts 8.8/10.9:

M6 – 9,9/14 Nm **M8** – 24/34 Nm **M10** – 48/67 Nm
M12 – 83/117 Nm **M14** – 132/185 Nm **M16** – 200/285 Nm

NOTE

After install the towing hitch you should get adequate note in registration book
(at authorised service station).The car should be equipped with:

- Indicators
- Tow mirrors

After 1000km check all bolts. The ball of towing hitch must be always kept
clear and conserve with a grease.